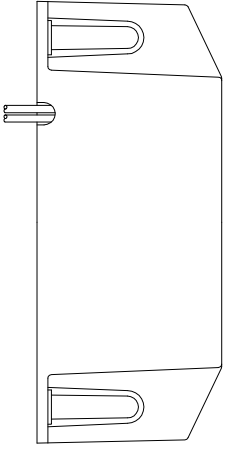
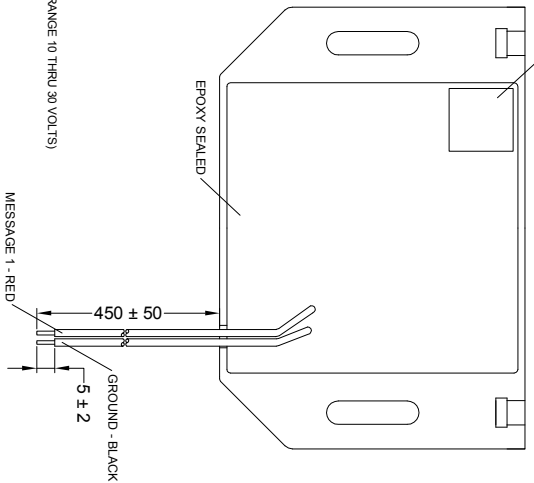
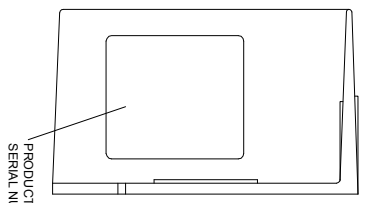
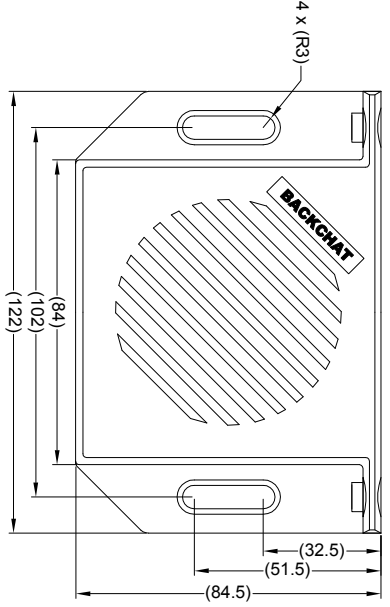
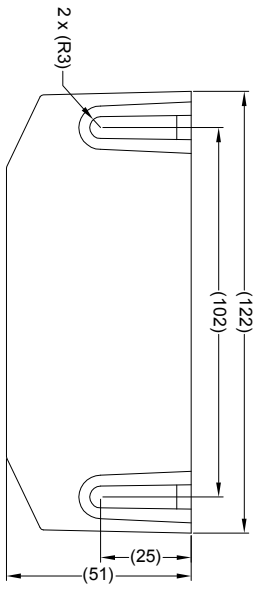


Revision Notes			
R1 - NOTES UPDATED TO INDICATE CORRECT LABEL DETAILS, STANDARDS UPDATED AS PER ECR CR-A253.			
SPL SPECIFICATION REVISED AS PER ECR CR-A211			
APA: AHEDDLE	Drawn/BATES	Checked/M/BUTLER	Approved/G/PLITH
			Date: 06/02/14



SPECIFICATION

RATED VOLTAGE: 12 AND 24 VOLTS DIRECT CURRENT (WORKING VOLTAGE RANGE: 10 THRU 30 VOLTS)

RATED CURRENT: 0.5 AMPERES OR LESS

SOUND PRESSURE: 90±4 DECIBELS AT TEST VOLTAGE OF 14 AND 28 VOLTS

CABLE THICKNESS: ALL CABLES 240.2MM

ACTUAL MESSAGE(S): "SSH SSH STAND WELL CLEAR VEHICLE REVERSING"

MESSAGE LIBRARY NUMBER(S): 885, M1078D

VOICE/ACCENT: MALE

LANGUAGE: ENGLISH

- NOTES:**
1. MATERIAL: ABS PLASTIC - ULTRA VIOLET STABILIZED
 2. FINISH: BLACK
 3. FOR PRODUCT LABEL REFER TO LATEST REVISION OF DRAWING BE-002749-XX-13.
 4. FOR GIFTBOX LABEL REFER TO LATEST REVISION OF DRAWING BE-002325-XX-13.
 5. FOR MANUFACTURE LABEL REFER TO LATEST REVISION OF DRAWING BE-001990-XX-12
 6. 2 X M6 X25 BOLTS, 2 X M6 FLAT WASHER & 2 X M6 NUTS ARE SUPPLIED IN A PRESS SEAL BAG IN THE BOX.
 7. POWER & MESSAGE CABLE LENGTHS ARE MEASURED FROM CABLE ENTRY POINT ON HOUSING.

PROPRIETARY NOTICE

THIS DESIGN AND TECHNICAL INFORMATION APPEARING ON THIS DRAWING IS THE PROPERTY OF BRIGADE ELECTRONICS, AND IS DISCLOSED IN CONFIDENCE. IT IS NOT TO BE COPIED, REPRODUCED, REVEALED TO OR EXPROPRIATED BY OTHERS, EITHER IN WHOLE OR IN PART WITHOUT THE EXPRESS WRITTEN CONSENT OF BRIGADE ELECTRONICS.

BRIGADE
www.brigade-electronics.com

<p>Angle of Projection Third Angle</p>	Assembly Pl Approval AHEDDLE		Approved by S.MATTHEWS	Checked by L.BRAR	Drawn by M.BUTLER
	Status RELEASED	Scale N/A	Released 19/10/12	Assembly Ref A1125	
	Part No #0077A				BC-01
					BE-001930-01-12